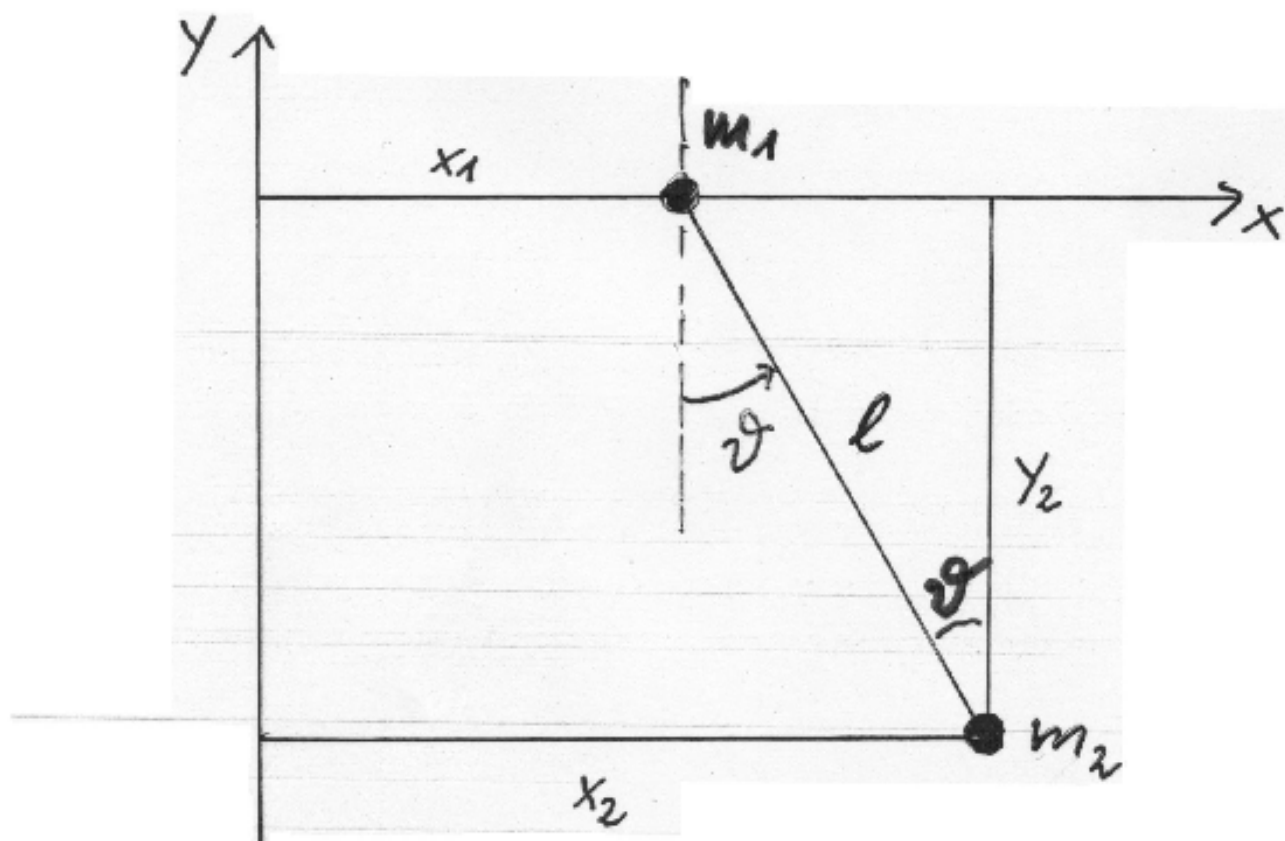


# Ebenes Schienenpendel



$$T = \frac{m_1}{2} \dot{x}_1^2 + \frac{m_2}{2} (\dot{x}_2^2 + \dot{y}_2^2)$$

$$U = m_2 g y_2$$

$$y_2 = -l \cos \vartheta$$

$$x_2 = x_1 + l \sin \vartheta$$